

QuickPanel* View/Control Memory Module Quick Install Guide

IC754ACC32MEM
IC754ACC64MEM

April 2010

GFK-2276

Warnings, Cautions, and Notes as Used in this Publication

Warning

Warning notices are used in this publication to emphasize that hazardous voltages, currents, temperatures, or other conditions that could cause personal injury exist in this equipment or may be associated with its use.

In situations where inattention could cause either personal injury or damage to equipment, a Warning notice is used.

Caution

Caution notices are used where equipment might be damaged if care is not taken.

Note: Notes merely call attention to information that is especially significant to understanding and operating the equipment.

This document is based on information available at the time of its publication. While efforts have been made to be accurate, the information contained herein does not purport to cover all details or variations in hardware or software, nor to provide for every possible contingency in connection with installation, operation, or maintenance. Features may be described herein which are not present in all hardware and software systems. GE Intelligent Platforms assumes no obligation of notice to holders of this document with respect to changes subsequently made.

GE Intelligent Platforms makes no representation or warranty, expressed, implied, or statutory with respect to, and assumes no responsibility for the accuracy, completeness, sufficiency, or usefulness of the information contained herein. No warranties of merchantability or fitness for purpose shall apply.

* Indicates a trademark of GE Intelligent Platforms, Inc. and/or its affiliates. All other trademarks are the property of their respective owners.

Contact Information

If you purchased this product through an Authorized Channel Partner, please contact the seller directly.

General Contact Information

Online technical support and GlobalCare	http://www.ge-ip.com/support
Additional information	http://www.ge-ip.com/
Solution Provider	solutionprovider.ip@ge.com

Technical Support

If you have technical problems that cannot be resolved with the information in this guide, please contact us by telephone or email, or on the web at www.ge-ip.com/support

Americas

Online Technical Support	www.ge-ip.com/support
Phone	1-800-433-2682
International Americas Direct Dial	1-780-420-2010 (if toll free 800 option is unavailable)
Technical Support Email	support.ip@ge.com
Customer Care Email	customercare.ip@ge.com
Primary language of support	English

Contact Information

Europe, the Middle East, and Africa

Online Technical Support	www.ge-ip.com/support
Phone	+800-1-433-2682
EMEA Direct Dial	+352-26-722-780 (if toll free 800 option is unavailable or if dialing from a mobile telephone)
Technical Support Email	support.emea.ip@ge.com
Customer Care Email	customercare.emea.ip@ge.com
Primary languages of support	English, French, German, Italian, Czech, Spanish

Asia Pacific

Online Technical Support	www.ge-ip.com/support
Phone	+86-400-820-8208
	+86-21-3217-4826 (India, Indonesia, and Pakistan)
Technical Support Email	support.cn.ip@ge.com (China)
	support.jp.ip@ge.com (Japan)
	support.in.ip@ge.com (remaining Asia customers)
Customer Care Email	customercare.apo.ip@ge.com
	customercare.cn.ip@ge.com (China)

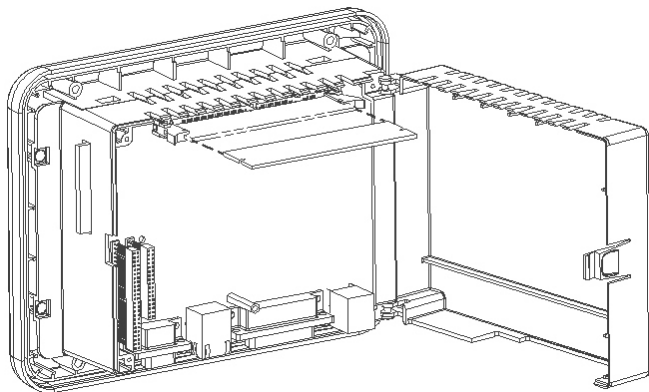
Installing a Memory Module

Warning: Always use anti-static precautions when handling the memory module or accessing the memory connector inside the QuickPanel View/Control.

1. Disconnect the DC power input terminal block connector from your QuickPanel View/Control.
2. **6" QuickPanel model (IC754xxx06CTD):** Open the back cover as shown on page 6.

12" QuickPanel model (IC754xxx12CTD): The access cover for the memory module connector is located above the back cover on these models. Remove the access cover by prying upward on the access cover at the locations marked by arrows.

Installation



Opening the back of a 6" QuickPanel View/Control

3. Spread the levers located on each side of the memory module connector.

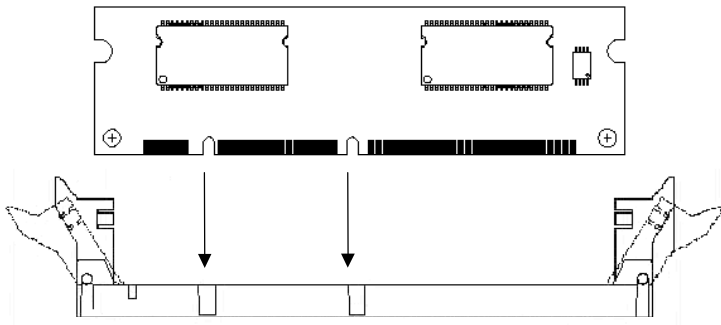
This connector is labeled PL1 on the 6" QuickPanel and is located at the top of the printed circuit board, visible when the back is opened.

The memory module connector is labeled PL2 on the 12" QuickPanel and is directly under the access cover.

Installation

4. Remove the memory module from its protective antistatic bag.
5. Grasp the memory module on the two opposing corners that are on the long side of the module opposite the side with the notches. Insert the edge with the notches into the connector.

Note: The notched side will only insert one way into the module connector. Ensure that the notches in the memory module align with the mating pegs in the connector before inserting.



Installation

6. When the memory module is inserted sufficiently into the connector, the two levers should automatically rise up and close over the memory module card edges.
7. Ensure the memory module is properly installed by verifying that the two levers have latched into the notches on both sides of the memory module. If the levers are not latched, manually lift them into position until they are engaged over the memory module card edges.
8. Close the back cover.
9. Apply power. The QuickPanel View/Control will automatically detect and use the memory module.

If desired, you can change the allocation of total system memory, including the memory supplied by the module, between memory used for object storage and memory used for program execution. From the Start Menu, select Settings, then select Control Panel, then System. The memory tab on the System Properties displays the allocation of system memory. For more information see the *QuickPanel View/Control Hardware User's Guide* (GFK-2243A or later).

Specifications

Form Factor	100 pin DIMM
Memory Type	DRAM
Maximum DRAM	64 Mbytes
Maximum Devices (Integrated Circuits) per module	Four
Bus Width	32 bits
Bus Speed	100 MHz, or faster
Voltage	3.3 Vdc
CAS Latency	CL = 3
Refresh Cycle Time	64ms maximum
Error Correction	Non-ECC
Error Detection	No Parity
Buffering	None
Device Row Addressing	12 address lines (A0 to A11)